

Port & Company® Youth Tie-Dye Pullover Hooded Sweatshirt. PC146Y



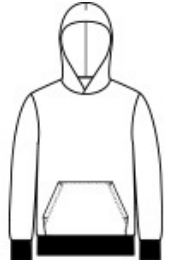
This throwback look is colorful and comfortable. This sweatshirt is created with a prepared-for-dye blank and hand dyed for a vibrant look.

- 7.8-ounce, 80/20 cotton/poly fleece
- Two-ply hood
- No drawcord at hood
- Front pouch pocket

The tie-dye process infuses each garment with unique character. Please allow for slight color variation.

CARE INSTRUCTIONS

Machine wash cold, inside out with like colors, only non-chlorine bleach when needed. Tumble dry medium. Do not iron.



front



back

HOW TO MEASURE



CHEST WIDTH

Measure under the arm and around the fullest part of the chest with arms down, keeping tape horizontal.

SIZE CHART

	M	XS	S	L	XL
Size	10/12	4	6/8	14/16	18/20
Chest	28-30	25-26	26-28	30-32	32-35

COLOR INFORMATION



Black
PMS NTR BLACK



Kelly
PMS 340C



Navy
PMS 2380C



Neon Rainbow



Pink



Purple
PMS 7627C



Rainbow



Royal
PMS 2133C



Turquoise
PMS 7704C