



# Red Kap® Long Sleeve Industrial Work Shirt. SP14



Red Kap puts the toughest materials and advanced stay-clean technology into this shirt so you get the most out of it. This hardworking IL50 style is tested through 50 industrial launderer washes.

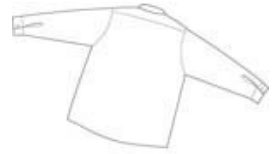
- 4.25-ounce, 65/35 poly/cotton with Touchtex™ technology for superior color retention, stain release and wickability
- Open collar with sewn-in stays
- 6 button with metal collar gripper closure at neck
- Two button-through pockets
- Bartacked pencil stall on left pocket

### CARE INSTRUCTIONS

Machine wash, tumble dry.

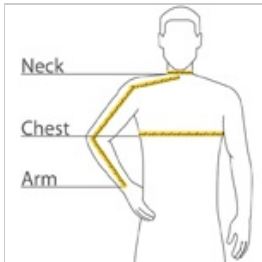


front



back

### HOW TO MEASURE



#### CHEST WIDTH

Measure under the arm and around the fullest part of the chest with arms down, keeping tape horizontal.

#### NECK

Measure around the fullest part of the neck at the base.

#### ARM

Place hand on hip. Start at the center of the back of the neck and measure across the shoulder, to the elbow, and then down to the wrist.

### SIZE CHART

	SR	MR	LR	XLR	2XLR	3XLR	4XLR	5XLR	6XLR
Chest	34 1/2 - 38	38 1/2 - 42	42 1/2 - 46	46 1/2 - 50	50 1/2 - 53	53 1/2 - 56	56 1/2 - 59	59 1/2 - 62	62 1/2 - 65
Neck	13 5/8 - 14 1/2	14 5/8 - 15 1/2	15 5/8 - 16 1/2	16 5/8 - 17 1/2	17 5/8 - 18 1/2	18 5/8 - 19 1/2	19 5/8 - 20 1/2	20 5/8 - 21 1/2	21 5/8 - 22 1/2
Arm	34.25	34.75	35.25	35.75	36.25	36.75	37.25	37.75	38

### COLOR INFORMATION



Black  
PMS NTR BLACK



Charcoal  
PMS 7540C



Grey  
PMS 409C



Light Blue  
PMS 7451C



Light Green  
PMS 5625 C



Light Grey  
PMS 422C



Light Tan  
PMS 7536C



Navy  
PMS 532C



Petrol Blue  
PMS 2135C