

# SPEC SHEET + MEASUREMENTS



## Red Kap® Industrial Cargo Short. PT66

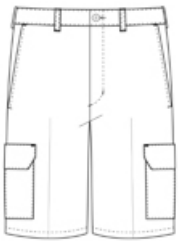
### Product photo



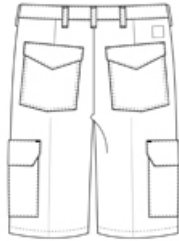
Built for the person who carries a lot of stuff, our IL50-strength Cargo Short has snap cargo pockets to pack what you need to get work done. Tested through 50 industrial launderer washes.

- 7.5-ounce, 65/35 poly/cotton twill with Touchtex PRO™ technology which provides breathable comfort lasting colors and stain resistance with an even softer feel
- TruBlack fabric resists fading wash after wash
- Requires minimal ironing thanks to a wrinkle-resistant finish
- Heavy-duty brass ratcheting zipper with button closure
- Two front pockets
- 12-inch inseam
- Two back patch pockets with spade pocket flaps and snap closure
- Two patch leg pockets with inverted center pleats, one-piece pocket flaps with mitered corners and two snap closures
- Industrial laundry friendly

### Sketches



front



back

### CARE INSTRUCTIONS

Industrial Wash. Home Wash. Light soil wash.

# SPEC SHEET + MEASUREMENTS



## Red Kap® Industrial Cargo Short. PT66

### PRODUCT MEASUREMENTS

	44	33	34	46	36	48	38	50	40	30	42	32
Inseam	10		10	10	10	10	10	10	10	10	10	10
Waist	44 1/2	33 1/2	34 1/2	46 1/2	36 1/2	48 1/2	38 1/2	50 1/2	40 1/2	30 1/2	42 1/2	32 1/2

**Inseam:** Measured from crotch seam to hem.

**Waist:** Measured point to point across the waistband when laid flat.

### SIZE CHARTS

	38x	48x	36x	46x	34x	44x	32x	42x	30x	40x	50x
Inseam	10	10	10	10	10	10	10	10	10	10	10
Waist	38 1/2	48 1/2	36 1/2	46 1/2	34 1/2	44 1/2	32 1/2	42 1/2	30 1/2	40 1/2	50 1/2

### HOW TO MEASURE



#### WAIST

Measure around the smallest part of the natural waist.

# SPEC SHEET + MEASUREMENTS



Red Kap® Industrial Cargo Short. PT66

## COLORS

---



Black  
PMS BLACK  
C



Khaki  
PMS 2324C



Navy  
PMS 532C