

SPEC SHEET + MEASUREMENTS

PORT AUTHORITY.

Port Authority® Women's Core Soft Shell Vest. L325

Product photo



Keep your core warm and protected from the elements in this versatile vest that's easy on the budget.

- 100% polyester woven shell bonded to a water-resistant film insert and a 100% polyester microfleece lining
- 92/8 poly/spandex woven shell bonded to a water-resistant film insert and a 100% polyester microfleece lining (Heathers)
- 1000MM fabric waterproof rating
- 1000G/M² fabric breathability rating
- Wind-resistant and water-repellent
- Reverse coil zippers
- Zip-through cadet collar with chin guard
- Front zippered pockets
- Open hem

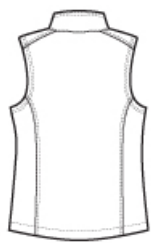
CARE INSTRUCTIONS

Machine wash cold with like colors, only non-chlorine bleach when needed. Tumble dry medium. Cool iron if necessary.

Sketches



front



back

SPEC SHEET + MEASUREMENTS

PORT AUTHORITY

Port Authority® Women's Core Soft Shell Vest. L325

PRODUCT MEASUREMENTS

	XS	S	M	L	XL	XXL	3XL	4XL
Body Length at Front	24 1/4	24 3/4	25 1/4	26 1/4	27 1/4	28 1/4	28 3/4	29 1/4
Bust	17	18	19	20 1/2	22	23 1/2	25 1/2	27 1/2
Size	2	4/6	8/10	12/14	16/18	20/22	24/26	28/30

Body Length at Front: Measure from high point shoulder to lowest point of hem at front.

Bust: Measured across the chest one inch below armhole when laid flat.

SIZE CHARTS

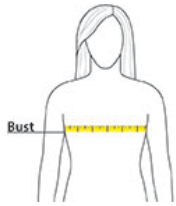
	XS	S	M	L	XL	XXL	3XL	4XL
Bust	32-34	35-36	37-38	39-41	42-44	45-47	48-51	52-55
Size	2	4/6	8/10	12/14	16/18	20/22	24/26	28/30

SPEC SHEET + MEASUREMENTS

PORT AUTHORITY.

Port Authority® Women's Core Soft Shell Vest. L325

HOW TO MEASURE



BUST

Measure under the arm and around the fullest part of the bust with arms down, keeping tape horizontal.

COLORS



Battleship
Grey
PMS 7540 C



Black
PMS BLACK
C



Black
Charcoal
Heather
PMS 426C



Dress Blue
Navy
PMS 533C



Marshmallow
PMS COOL
GRAY 1C