

# SPEC SHEET + MEASUREMENTS

PORT AUTHORITY.

Port Authority® Denim Jacket. J7620

## Product photo



Classic denim jacket in a modern fit.

- 13.75-ounce, 100% garment washed indigo denim
- Two button-through flap chest pockets
- Button cuffs
- Front pockets
- Adjustable button waist tabs

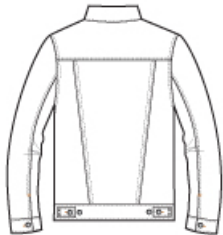
## CARE INSTRUCTIONS

Machine wash cold separately, do not bleach. Tumble dry. Cool iron if necessary. Do not dry clean if printed.

## Sketches



front



back

# SPEC SHEET + MEASUREMENTS

PORT AUTHORITY.

Port Authority® Denim Jacket. J7620

## PRODUCT MEASUREMENTS

	XS	S	M	L	XL	2XL	3XL	4XL
Chest	20 1/2	22	23 1/2	25	26 1/2	28	30	32
Body Length at Front	25	26	27	28	29	30	30 1/2	31
Sleeve From Shoulder	34 3/4	35 1/2	36 1/4	37	37 3/4	38 1/2	39 1/4	40

**Chest:** Measured across the chest one inch below armhole when laid flat.

**Body Length at Front:** Measure from high point shoulder to lowest point of hem at front.

**Sleeve From Shoulder:** Measured from high point of shoulder to finished hem at sleeve.

## SIZE CHARTS

	XS	S	M	L	XL	2XL	3XL	4XL
Chest	32-34	35-37	38-40	41-43	44-46	47-49	50-53	54-57

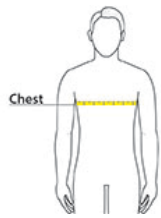
# SPEC SHEET + MEASUREMENTS

PORT AUTHORITY.

Port Authority® Denim Jacket. J7620

## HOW TO MEASURE

---



### CHEST

Measure under the arm and around the fullest part of the chest with arms down, keeping tape horizontal.

## COLORS

---



Denim Blue  
PMS 2380C