

SPEC SHEET + MEASUREMENTS



Champion® Powerblend® Pullover Hoodie. S700

Product photo



- 9-ounce, 50/50 U.S. grown cotton/poly
- 50/40/10 cotton/poly/black poly (Light Steel)
- 50/48/2 cotton/poly/black poly (Silver Grey)
- Double Dry technology wicks moisture
- Two-ply hood with dyed-to-match drawcords
- 1x1 rib knit sleeve cuffs and hem
- Front pouch pocket
- Embroidered Champion “C” logo at left cuff
- Woven back neck label

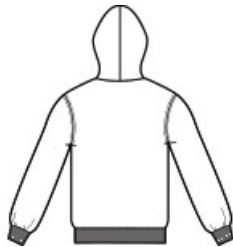
CARE INSTRUCTIONS

Machine wash cold with like colors. Do not bleach. Tumble dry low. Cool iron if necessary.

Sketches



front



back

SPEC SHEET + MEASUREMENTS



Champion® Powerblend® Pullover Hoodie. S700

PRODUCT MEASUREMENTS

	S	M	L	XL	2XL	3XL
Body Length at Back	27	28	29	30	31	32
Chest	20	22	24	26	28	30
Set in Sleeve Length	36	36 3/4	37 1/2	38 1/4	39	39 3/8

Body Length at Back: Measured from high point shoulder to finished hem at back.

Chest: Measured across the chest one inch below armhole when laid flat.

Set in Sleeve Length: Measure from Center Back neck to shoulder point to sleeve hem.

SIZE CHARTS

	S	M	L	XL	2XL	3XL	4XL
Chest	34-36	38-40	42-44	46-48	50-52	54-56	58-60

SPEC SHEET + MEASUREMENTS



Champion® Powerblend® Pullover Hoodie. S700

HOW TO MEASURE



CHEST

Measure under the arm and around the fullest part of the chest with arms down, keeping tape horizontal.

COLORS



Black
PMS BLACK
6C

BlueLagoon

BodyBlush



Charcoal
Heather

ChocBrown



Dark Green
PMS 5535C

DkGreenHt

EmeraldGrn

FreshOlive

Gold

GoldGlint

LateNgtBlu



Light Steel



Maroon
PMS 5115C



Navy
PMS 2767C



Navy Heather

Orange

RedRivClay



Royal Blue
PMS 2144C



Royal Blue
Heather



Sand
PMS WARM
GRAY 3C

ScarHthr



Scarlet
PMS 186C



Silver Grey



Stone Gray
PMS COOL
GRAY 2C



White

WowPink