



Whether worn alone or with a Sport-Tek wind shirt, these water-repellent pants provide lightweight protection.

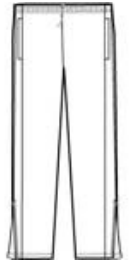
- 100% polyester
- 100% polyester mesh lining above knees, poly lining below for easy on/off
- Elastic waistband with drawcord
- Side pockets
- Back pocket with hook and loop closure
- Extended leg zippers

*\*Please note: This product is transitioning from woven labels to tag-free labels. Your order may contain a combination of both labels*

**CARE INSTRUCTIONS**

Machine wash cold, gentle cycle with like colors. Use mild detergent, remove immediately. Do not allow to lay on itself when wet. Do not bleach.

[Tips For Effectively Screen Printing Polyester Fabrics](#)

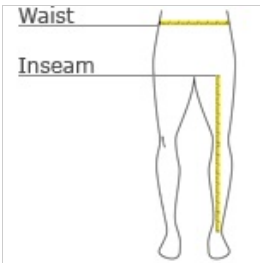


front



back

**HOW TO MEASURE**



**WAIST**

Measure around the smallest part of the natural waist.

**INSEAM**

Measure a similar style pant that fits well and is the desired length. Measure from the crotch seam to the hem.

**SIZE CHART**

	XS	S	M	L	XL
Waist	24-25	25-26	26-27	27-28	28-31

**COLOR INFORMATION**



Black  
PMS NTR BLACK  
C



True Navy  
PMS 533C



True Royal  
PMS 7686C