

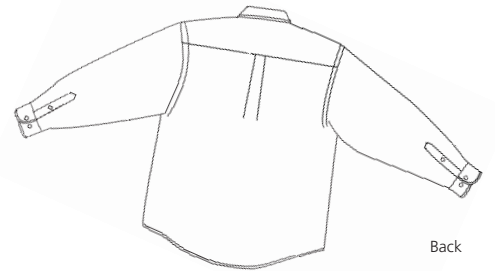


RED HOUSE

THE WINE COUNTRY LIFESTYLE



Front



Back

PINPOINT OXFORD

RH24

A classic pattern with no need for the old-fashioned iron. Our button-down shirts shrug off wrinkles, but unlike the average non-iron shirts, ours are specially treated to stay exceptionally soft.

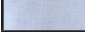


- 100% non-iron cotton, 3.7 oz
- Two-ply 80-doubles yarn
- Single-needle tailoring
- Red House engraved buttons and embroidery on sleeve plackets
- Left chest patch pocket



Care Instructions:

Machine wash warm with like colors.
Do not bleach. Tumble dry low.
Remove promptly and hang.

Finished Measurements in Inches								
Size	XS	S	M	L	XL	2XL	3XL	4XL
Chest	20	21.5	23	24.5	26	27.5	29	30.5
Body	26.5	28.5	32	32.5	34	34.5	35.5	36
Collar	15.5	16	16.5	17	17.5	18	18.5	19
Sleeve	31	32.5	34.5	35.5	37	38	39	40
Shoulder	18	19	20	21	22	23	24	25
Pocket	5 x 5.5	5 x 5.5	5.25 x 6	5.25 x 6	5.25 x 6	5.25 x 6	5.5 x 6.25	5.5 x 6.25

Colors	
	Blue
	Pink
	White

Please Note:

Colors shown are approximate and for reference only. For closest match see PMS colors, or for exact match, returnable samples and grommated samples are available.

Chest measured 1" under arm hole. Body length measured from center back neck seam to hem.

Sleeve measured from center back neck seam to hem. Shoulder width measured from arm hole to arm hole.

Pocket measured WxH. Collar measured by circumference.

Color Chart			
Colors	Blue	Pink	White
Textile PMS	15-3909TC	12-2906TC	11-0601TC
General PMS	536C	705C	663C
Madiera (Tonal Emb)	1275	1120	1071