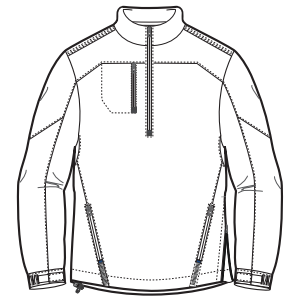
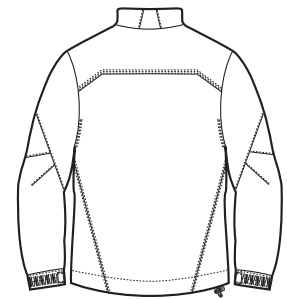


1/2 - Zip Wind Jacket

PORT AUTHORITY®



Front



Back

J703

- * 100% polyester shell with PU coating
- * 100% polyester lining throughout
- * Triple-needle stitching on shoulders and back yoke
- * Half elastic, half self-fabric cuffs for comfort
- * Side zippered pockets

Care Instructions:
Machine wash cold with like colors
Only non-chlorine bleach if needed
Tumble dry low, remove promptly
Cool iron if necessary

Finished Measurements in Inches

Size	XS	S	M	L	XL	2XL	3XL	4XL
Chest	23"	24"	25"	26"	27 1/2"	29"	32"	35"
Body	28 1/4"	28 3/4"	29 1/4"	30"	30 3/4"	31 1/2"	32 1/4"	33"
Sleeve	34 3/4"	35"	35 1/2"	36"	37"	37 3/4"	38 1/2"	40"

Chest width measured 1" below arm hole. Body length measured from high point shoulder seam to hem.
Sleeve length measured from shoulder seam to hem.

Colors

	Black
	Navy
	Stone
	Ivy Green
	True Blue

Please Note:
Colors shown are approximate and for reference only. For closest match see PMS colors, or for exact match, returnable samples and grommeted samples are available.

Color Chart

Colors	Black	Navy	Stone	Ivy Green	True Blue
Textile PMS	No Match	No Match	No Match	No Match	No match
General PMS	ProBlk C	432 C	7536 C	7497 C	No Match