

# SPEC SHEET + MEASUREMENTS

PORT AUTHORITY.

Port Authority® Embark Soft Shell Jacket. J307

## Product photo



Classic soft shell design merges with modern two-tone graphics in our Embark Soft Shell Jacket. This eye-catching way to battle rain and wind features a zip-through cadet collar with chin guard and adjustable cuffs for the perfect fit.

- 93/7 poly/spandex woven bonded to a water-resistant film insert and 100% polyester knit lining
- 1000MM fabric waterproof rating
- 1000G/M<sup>2</sup> fabric breathability rating
- Has stretch and is water-repellent
- Interior storm flap with chin guard
- Vislon® zippers
- Self-fabric adjustable tab cuffs with hook and loop closures
- Front zippered pockets
- Open hem

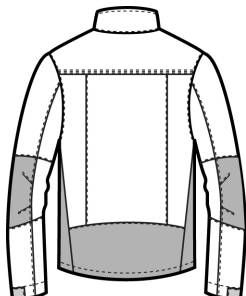
## CARE INSTRUCTIONS

Machine wash cold on gentle cycle with like colors. Use mild detergent. Remove immediately. Do not allow to lay on itself when wet. Tumble dry low. Cool iron if needed. Do not dry clean.

## Sketches



front



back

# SPEC SHEET + MEASUREMENTS

PORT AUTHORITY

Port Authority® Embark Soft Shell Jacket. J307

## PRODUCT MEASUREMENTS

	XS	S	M	L	XL	2XL	3XL	4XL
Chest	19 3/4	21 1/4	22 3/4	24 1/4	25 3/4	27 1/4	29 1/4	31 1/4
Sleeve From Shoulder	34	34 3/4	35 1/2	36 1/4	37	37 3/4	38 1/2	39 1/4
Body Length at Back	26	27	28	29	30	31	31 1/2	32

**Chest:** Measured across the chest one inch below armhole when laid flat.

**Sleeve From Shoulder:** Measured from high point of shoulder to finished hem at sleeve.

**Body Length at Back:** Measured from high point shoulder to finished hem at back.

## SIZE CHARTS

	XS	S	M	L	XL	2XL	3XL	4XL
Chest Size (inches)	32-34	35-37	38-40	41-43	44-46	47-49	50-53	54-57

# SPEC SHEET + MEASUREMENTS

PORT AUTHORITY.

Port Authority® Embark Soft Shell Jacket. J307

## HOW TO MEASURE

---



### CHEST

Measure under the arm and around the fullest part of the chest with arms down, keeping tape horizontal.