

SPEC SHEET + MEASUREMENTS



Eddie Bauer® Women's Packable Wind Jacket. EB501

Product photo



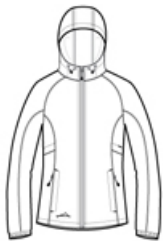
Wind was the inspiration for this compact layer. Plus, it packs down into its own logo-adorned pocket, making it easy to carry wherever you go.

- 100% nylon
- Hood with locking drawcords for adjustability
- Contrast reverse coil zipper
- Underarm vents
- Front zippered pockets
- Packs into its own zippered right pocket
- Elastic cuffs and an open hem
- Contrast Eddie Bauer logo on right hem

CARE INSTRUCTIONS

Secure All Garment Before Laundering. Machine Wash Warm. Delicate Separately. Use Mild Detergent. Rinse Thoroughly. Do Not Bleach. Tumble Dry Low. Or For Best Result Line Dry. Do Not Iron. Do Not Dry Clean.

Sketches



front



back

SPEC SHEET + MEASUREMENTS



Eddie Bauer® Women's Packable Wind Jacket. EB501

PRODUCT MEASUREMENTS

	XS	S	M	L	XL	2XL	3XL	4XL
Body Length at Back	25	25 1/2	26	26 1/2	27	28	28 1/2	29
Chest Size (inches)	19 1/4	20 1/4	21 1/4	22 3/4	24 1/4	25 3/4	27 3/4	29 3/4
Sleeve Length	32 3/4	33 1/4	33 3/4	34 1/4	34 5/8	34 7/8	35 1/4	35 3/8

Body Length at Back: Measured from high point shoulder to finished hem at back.

Sleeve Length: Start at center of neck and measure down shoulder, down sleeve to hem.

SIZE CHARTS

	XS	S	M	L	XL	2XL	3XL	4XL
Bust	32-33	34-35	36-37	38-40	41-43	44-46	47-49	50-52
Size	2	4/6	8/10	12/14	16/18	20/22	24/26	28/30

SPEC SHEET + MEASUREMENTS



Eddie Bauer® Women's Packable Wind Jacket. EB501

HOW TO MEASURE



BUST

Measure under the arm and around the fullest part of the bust with arms down, keeping tape horizontal.

COLORS



Adriatic Blue
PMS 4161C



Black
PMS BLACK
C



Grey Steel
PMS 7540C



Pear