

SPEC SHEET + MEASUREMENTS



Eddie Bauer® - Ladies Wind-Resistant Full-Zip Fleece Jacket. EB231

Product photo



Built from high density heavyweight fleece, this wind-resistant jacket handles the wind without bulk. Great as a mid-layer, this fleece is stylish and warm enough to be worn on its own.

- 17-ounce, 100% polyester fleece
- Cadet collar with chin guard
- Reverse coil zipper
- Front zippered pockets
- Open cuffs and an open hem
- Contrast embroidered Eddie Bauer logo on right hem

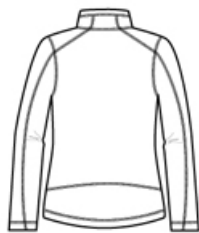
CARE INSTRUCTIONS

Machine wash cold, wash inside out with like colors. Do not Bleach. Do not iron. Do not dry clean. Tumble dry low.

Sketches



front



back

SPEC SHEET + MEASUREMENTS



Eddie Bauer® - Ladies Wind-Resistant Full-Zip Fleece Jacket. EB231

PRODUCT MEASUREMENTS

	XS	S	M	L	XL	2XL	3XL	4XL
Body Length at Back	25	25 1/2	26	26 1/2	27	27 1/2	28	28 1/2
Chest	18	19	20	21 1/2	23 1/2	25 1/2	27 1/2	29 1/2
Sleeve Length	31 1/4	31 3/4	32 1/4	32 7/8	33 1/2	34 1/8	34 3/4	35 3/8

Body Length at Back: Measured from high point shoulder to finished hem at back.

Chest: Measured across the chest one inch below armhole when laid flat.

Sleeve Length: Start at center of neck and measure down shoulder, down sleeve to hem.

SIZE CHARTS

	XS	S	M	L	XL	2XL	3XL	4XL
Bust	32-33	34-35	36-37	38-40	41-43	44-46	47-49	50-52
Size	2	4/6	8/10	12/14	16/18	20/22	24/26	28/30

SPEC SHEET + MEASUREMENTS



Eddie Bauer® - Ladies Wind-Resistant Full-Zip Fleece Jacket. EB231

HOW TO MEASURE



BUST

Measure under the arm and around the fullest part of the bust with arms down, keeping tape horizontal.

COLORS



Black
PMS BTR
BLACK C



Iron Gate
PMS CL
GREY 10 C