



Nike Sphere Dry Diamond Polo. 354055



Achieve the pinnacle of performance in this style that pairs a rich diamond texture with Nike Sphere Dry moisture management technology. The ultramodern fabric has a textured inside surface that minimizes cling by allowing only a portion of the shirt to come in contact with the skin. Perfect for any occasion, this exceptional shirt is designed for maximum movement and increased air flow. Finished with a self-fabric collar and open hem sleeves. Features a three-button placket. Pearlized buttons are selected to complement the shirt color. The contrast Swoosh design trademark is embroidered on the left sleeve. Made of 6.35-ounce, 89/11 polyester/spandex.

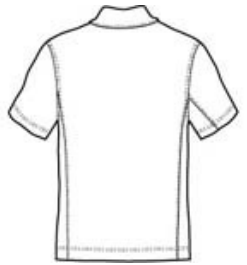
CARE INSTRUCTIONS

Machine wash warm, with like colors. Do not bleach. Do not use softeners. Tumble dry low. Cool iron. Do not dry clean.

[Tips For Effectively Screen Printing Polyester Fabrics](#)



front



back

HOW TO MEASURE



CHEST WIDTH

Measure under the arm and around the fullest part of the chest with arms down, keeping tape horizontal.

SIZE CHART

| | XS | S | M | L | XL | 2XL | 3XL | 4XL |
|-------|-------|-------------|-------------|---------|-------------|-----------------|-------------|---------|
| Chest | 32-35 | 35 - 37 1/2 | 37 1/2 - 41 | 41 - 44 | 44 - 48 1/2 | 48 1/2 - 53 1/2 | 53 1/2 - 58 | 58 - 63 |

COLOR INFORMATION



Black
PMS PROCESS
BLACK C



Diffused Blue



Midnight Navy
PMS 2767C



Mountain Blue
PMS PMS 653C



Varsity Red
PMS 704C



White