

SPEC SHEET + MEASUREMENTS



OGIO® Modern Performance Full-Zip. OE703

Product photo



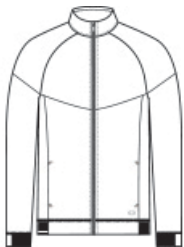
LAYERABLE WARMTH STRETCH STAY-COOL WICKING REFLECTIVE DETAILS

- 7.4-ounce, 85/15 poly/spandex with stay-cool wicking technology
- Reflective OGIO heat transfer label for tag-free comfort
- Zip-through cadet collar
- Black reflective O heat transfer on center back collar
- Front and shoulder piecing details
- Metaluxe® zipper
- Engraved matte black metal O zipper pull
- Black reflective O heat transfer on left pocket

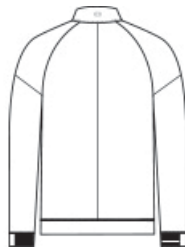
CARE INSTRUCTIONS

Machine wash cold with like colors. Do not use fabric softener. Only non-chlorine bleach, when needed. Tumble dry low. Remove promptly. Cool iron, if necessary. Do not dry clean.

Sketches



front



back

SPEC SHEET + MEASUREMENTS



OGIO® Modern Performance Full-Zip. OE703

PRODUCT MEASUREMENTS

| | XS | S | M | L | XL | 2XL | 3XL | 4XL |
|--------------------------------|--------|--------|--------|--------|--------|--------|--------|--------|
| Body Length at Back | 26 1/2 | 27 1/2 | 28 1/2 | 29 1/2 | 30 1/2 | 31 1/2 | 32 | 32 1/2 |
| Chest | 19 1/2 | 21 | 22 1/2 | 24 | 25 1/2 | 27 1/2 | 29 | 32 |
| Sleeve Length from Center Back | 33 1/4 | 34 | 34 3/4 | 35 1/2 | 36 1/4 | 37 1/2 | 37 3/4 | 38 1/2 |

Body Length at Back: Measured from high point shoulder to finished hem at back.

Chest: Measured across the chest one inch below armhole when laid flat.

Sleeve Length from Center Back: Measure from Center Back neck to shoulder point to sleeve hem.

SIZE CHARTS

| | XS | S | M | L | XL | 2XL | 3XL | 4XL |
|-------|-------|-------|-------|-------|-------|-------|-------|-------|
| Chest | 32-34 | 35-37 | 38-40 | 41-43 | 44-46 | 47-49 | 50-53 | 54-57 |

SPEC SHEET + MEASUREMENTS



OGIO® Modern Performance Full-Zip. OE703

HOW TO MEASURE



CHEST

Measure under the arm and around the fullest part of the chest with arms down, keeping tape horizontal.

COLORS



Blacktop
PMS BLACK
C



Deep Olive



Navy
PMS 5255C



Tarmac Grey