

# SPEC SHEET + MEASUREMENTS



## OGIO® Women's Pulse Dolman Tee. LOE324

### Product photo



STAY-COOL WICKING  
ULTRABREATHABLE  
FLATLOCK SEAMS FOR COMFORT  
REFLECTIVE DETAILS

- 4-ounce, 100% poly with stay-cool wicking technology
- OGIO heat transfer label for tag-free comfort
- Reflective O heat transfer on left hem
- Reflective O vertical bar heat transfer on center back

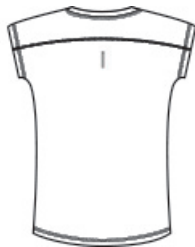
### CARE INSTRUCTIONS

Machine wash cold with like colors. Do not use fabric softener.  
Do not bleach. Tumble dry low. Cool iron. Do not dry clean.

### Sketches



front



back

# SPEC SHEET + MEASUREMENTS



OGIO® Women's Pulse Dolman Tee. LOE324

## PRODUCT MEASUREMENTS

	XS	S	M	L	XL	2XL	3XL	4XL
Size	2	4/6	8/10	12/14	16/18	20/22	24/26	28/30
Body Length at Back	26	26 1/2	27	27 1/2	28	28 1/2	29	29 1/2
Bust	18	19	20	21 1/2	23	24 1/2	26 1/2	28 1/2

**Body Length at Back:** Measured from high point shoulder to finished hem at back.

**Bust:** Measured across the chest one inch below armhole when laid flat.

## SIZE CHARTS

	XS	S	M	L	XL	2XL	3XL	4XL
Size	2	4/6	8/10	12/14	16/18	20/22	24/26	28/30
Bust	32-34	35-36	37-38	39-41	42-44	45-47	48-51	52-55

# SPEC SHEET + MEASUREMENTS



OGIO® Women's Pulse Dolman Tee. LOE324

## HOW TO MEASURE

---



### **BUST**

Measure under the arm and around the fullest part of the bust with arms down, keeping tape horizontal.

## COLORS

---



Blacktop  
PMS BLACK  
C



Electric Blue  
PMS 2145C



Gear Grey  
PMS 425C



Pink Rogue  
PMS 710C