

SPEC SHEET + MEASUREMENTS

PORT AUTHORITY.

Port Authority® Women's Easy Care Open-Front Cardigan Sweater. LSW2890

Product photo



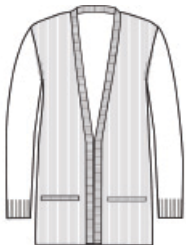
Blending professionalism with supreme comfort, this beautiful tri-blend sweater is an exceptional addition to any work wardrobe.

- 56/29/15 cotton/nylon/acrylic
- Fully-fashioned seams
- Machine washable
- 2x1 rib knit front body, cuffs and back hem
- Jersey sleeves and back body
- Rib knit front lapel
- Front pockets
- Longer length

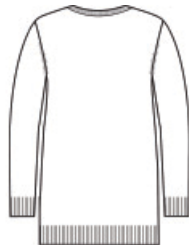
CARE INSTRUCTIONS

Turn Garment Inside Out. Machine Wash Cold With Like Colors. Gentle Cycle. Only Non-Chlorine Bleach When Needed. Reshape And Lay Flat To Dry. Warm Iron If Needed.

Sketches



front



back

SPEC SHEET + MEASUREMENTS

PORT AUTHORITY

Port Authority® Women's Easy Care Open-Front Cardigan
Sweater. LSW2890

PRODUCT MEASUREMENTS

	XS	S	M	L	XL	XXL	3XL	4XL
Body Length at Back	29 1/4	29 3/4	30 1/4	30 3/4	31 1/4	31 3/4	32 1/4	32 3/4
Bust	20	21	22	23 1/2	25	26 1/2	28 1/2	30 1/2
Size	2	4/6	8/10	12/14	16/18	20/22	24/26	28/30
Sleeve Length from Center Back	31	31 1/2	32	32 5/8	33 1/4	33 7/8	34 1/4	34 5/8

Body Length at Back: Measured from high point shoulder to finished hem at back.

Bust: Measured across the chest one inch below armhole when laid flat.

Sleeve Length from Center Back: Measure from Center Back neck to shoulder point to sleeve hem.

SIZE CHARTS

	XS	S	M	L	XL	XXL	3XL	4XL
Bust	32-34	35-36	37-38	39-41	42-44	45-47	48-51	52-55
Size	2	4/6	8/10	12/14	16/18	20/22	24/26	28/30

SPEC SHEET + MEASUREMENTS

PORT AUTHORITY.

Port Authority® Women's Easy Care Open-Front Cardigan
Sweater. LSW2890

HOW TO MEASURE



BUST

Measure under the arm and around the fullest part of the bust with arms down, keeping tape horizontal.

COLORS



Charcoal
Heather
PMS 7540C



Deep Black
PMS Black C



Medium
Heather Grey
PMS 425C



Oatmeal
Heather



River Blue
Navy
PMS 533C