

# SPEC SHEET + MEASUREMENTS

PORT AUTHORITY.

Port Authority® C-FREE® Raglan Fleece. F700

## Product photo



Make a sustainable choice with this full-zip fleece jacket created for easy-wearing warmth and a reduced carbon footprint.

- 8.3-ounce, 100% recycled polyester fleece
- This product's carbon footprint has been measured and reduced through a combination of preferred materials and investing in carbon offset projects through the ClimeCo Certified Product™ Program
- Low-pill finish
- Zip-through cadet collar
- Binding at neck, center front at zipper, cuffs and hem
- Raglan sleeves for mobility
- Reverse coil zippers
- Front zippered pockets

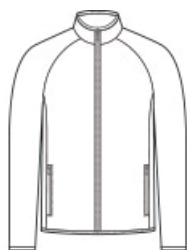
### A C-FREE® Product

We start by reducing the product's impact by switching to at least 50% preferred materials. We then measure and reduce the total carbon footprint of each product in the C-FREE program—from cradle-to-grave—through the ClimeCo Certified Product™ Program. This certification purchases third-party, verified carbon offsets through ClimeCo.

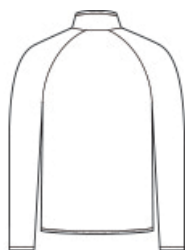
### CARE INSTRUCTIONS

Machine Wash Cold With Like Colors. Gentle Cycle. Non-Chlorine Bleach When Needed. Tumble Dry Low. Remove Promptly. Do Not Iron.

## Sketches



front



back

# SPEC SHEET + MEASUREMENTS

PORT AUTHORITY

Port Authority® C-FREE® Raglan Fleece. F700

## PRODUCT MEASUREMENTS

	XS	S	M	L	XL	2XL	3XL	4XL
Body Length at Back	26 1/2	27 1/2	28 1/2	29 1/2	30 1/2	31 1/2	32	32 1/2
Chest	18 1/2	20	21 1/2	23	24 1/2	26	28	30
Raglans and Dolmans Sleeve Length	34 1/8	34 3/4	35 3/8	36	36 5/8	37 1/4	38	38 3/4

**Body Length at Back:** Measured from high point shoulder to finished hem at back.

**Chest:** Measured across the chest one inch below armhole when laid flat.

**Raglans and Dolmans Sleeve Length:** Measure from neck edge to finished hem.

## SIZE CHARTS

	XS	S	M	L	XL	2XL	3XL	4XL
Chest	32-34	35-37	38-40	41-43	44-46	47-49	50-53	54-57

# SPEC SHEET + MEASUREMENTS

PORT AUTHORITY.

Port Authority® C-FREE® Raglan Fleece. F700

## HOW TO MEASURE

---



### CHEST

Measure under the arm and around the fullest part of the chest with arms down, keeping tape horizontal.

## COLORS

---



Dark Green  
PMS 5467C



Deep Black  
PMS Black C



Grey Steel  
PMS 7540C



Rich Red  
PMS 207C



True Navy  
PMS 533C



True Royal  
PMS 7687C