

SPEC SHEET + MEASUREMENTS



Mercer+Mettle® Stretch Soft Shell Jacket. MM7102

Product photo



Made from a sophisticated and supple double-weave fabric, this soft shell brings professional polish and weather-resistant performance together beautifully. The combination of refined style with a comfortable fit transitions seamlessly between home and office wear.

Fabric

- 92/8 poly/spandex
- 93/7 poly/spandex (Anchor Grey Heather)
- Durable water-repellent (DWR) finish

Features+Benefits

- 4-way stretch
- Exposed, molded zippers with metallic finish
- Matte black zipper pulls

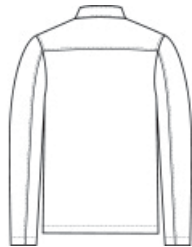
CARE INSTRUCTIONS

Turn Garment Inside Out. Machine Wash Cold With Like Colors. Do Not Use Fabric Softener Or Dryer Sheets. Do Not Bleach. Tumble Dry Low. Cool Iron If Necessary. Do Not Dry Clean.

Sketches



front



back

SPEC SHEET + MEASUREMENTS



Mercer+Mettle® Stretch Soft Shell Jacket. MM7102

PRODUCT MEASUREMENTS

	XS	S	M	L	XL	2XL	3XL	4XL
Body Length at Back	25	26	27	28	29	30	30 3/4	31 1/2
Chest	19	20 1/2	22	23 1/2	25 1/2	27 1/2	30	33
Sleeve Length from Center Back	34 1/4	35	35 3/4	36 1/2	37 1/4	38	38 3/4	39 1/2

Body Length at Back: Measured from high point shoulder to finished hem at back.

Chest: Measured across the chest one inch below armhole when laid flat.

Sleeve Length from Center Back: Measure from Center Back neck to shoulder point to sleeve hem.

SIZE CHARTS

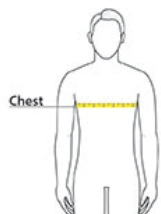
	XS	S	M	L	XL	2XL	3XL	4XL
Chest	32-34	35-37	38-40	41-43	44-47	48-51	52-56	57-61

SPEC SHEET + MEASUREMENTS



Mercer+Mettle® Stretch Soft Shell Jacket. MM7102

HOW TO MEASURE



CHEST

Measure under the arm and around the fullest part of the chest with arms down, keeping tape horizontal.

COLORS



Anchor Grey
Heather
PMS 426C



Deep Black
PMS Black C



Night Navy
PMS 532C