

SPEC SHEET + MEASUREMENTS



Nike Victory Solid Polo. NKDX6684

Product photo



Built from 100% recycled polyester fabric, Nike scores a victory for sustainability and performance in this sophisticated polo engineered with Dri-FIT moisture management technology.

- 4-ounce, 100% recycled polyester fabric
- Flat knit collar
- Two-button placket
- Dyed-to-match buttons with 60% recycled content
- Open hem sleeves
- Open hem
- Contrast heat transfer Swoosh logo on left sleeve

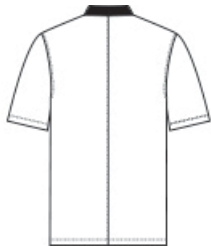
CARE INSTRUCTIONS

Machine Wash Cold. Wash With Like Colors. Do Not Use Softeners. Remove Immediately. Do Not Allow To Lay On Itself When Wet. Do Not Bleach. Tumble Dry Low. Cool Iron. Do Not Dry Clean.

Sketches



front



back

SPEC SHEET + MEASUREMENTS



Nike Victory Solid Polo. NKDX6684

PRODUCT MEASUREMENTS

	XS	S	M	L	XL	2XL	3XL	4XL
Body Length at Back	28 3/4	29 1/8	19 1/2	30 5/8	31 1/2	32 5/8	33 7/8	35
Chest	18 3/4	20 3/8	22	23 1/2	25 1/2	27 1/2	29 3/4	31 3/8
Set in Sleeve Length	8 7/8	9 1/8	9 3/8	9 5/8	9 7/8	10 1/8	10 3/8	10 5/8

Body Length at Back: Measured from high point shoulder to finished hem at back.

Chest: Measured across the chest one inch below armhole when laid flat.

Set in Sleeve Length: Measure from Center Back neck to shoulder point to sleeve hem.

SIZE CHARTS

	XS	S	M	L	XL	2XL	3XL	4XL
Chest	32-35	35-37 1/2	37 1/2-41	41-44	44-48 1/2	48 1/2 -53 1/2	53 1/2 - 58	58-63

SPEC SHEET + MEASUREMENTS



Nike Victory Solid Polo. NKDX6684

HOW TO MEASURE



CHEST

Measure under the arm and around the fullest part of the chest with arms down, keeping tape horizontal.

COLORS



Black
PMS BLACK
C



College Navy
PMS 533C



Cool Grey
PMS 424C



Light Photo
Blue
PMS 7690C



University Red
PMS 200C