

# SPEC SHEET + MEASUREMENTS



## Eddie Bauer® WeatherEdge® Plus Jacket. EB560

### Product photo



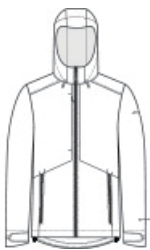
Fully seam-sealed and engineered from extremely waterproof, breathable 10K/10K fabric, this jacket helps ensure warmth and comfort—no matter what Mother Nature serves up. Designed with stretch, it features exclusive WeatherEdge Plus and StormRepel® durable water-repellent (DWR) technology for unparalleled protection against rain, snow, sleet and hail.

- 92/8 poly/spandex with 100% polyester lining
- Adjustable hood with locking drawcord
- Waterproof front molded zippered pockets
- Adjustable tab cuffs with hook and loop closures
- Decoration access pocket
- Full-length interior storm flap
- Adjustable locking drawcord hem
- Contrast heat transfer Eddie Bauer logo at left shoulder
- Contrast heat transfer WeatherEdge Plus logo on left cuff

### CARE INSTRUCTIONS

Machine Wash Cold Separately Or With Like Colors. Only Non-Chlorine Bleach When Needed. Tumble Dry Low. Do Not Iron.

### Sketches



front



back

# SPEC SHEET + MEASUREMENTS



Eddie Bauer® WeatherEdge® Plus Jacket. EB560

## PRODUCT MEASUREMENTS

	XS	S	M	L	XL	2XL	3XL	4XL
Body Length at Back	29	30	31	32	33	34	34 1/2	35
Chest	19 1/2	21	22 1/2	24	25 1/2	27	29	31
Sleeve Length from Center Back	35	35 3/4	36 1/2	37 1/4	38	38 3/4	39 1/2	40 1/4

**Body Length at Back:** Measured from high point shoulder to finished hem at back.

**Chest:** Measured across the chest one inch below armhole when laid flat.

**Sleeve Length from Center Back:** Measure from Center Back neck to shoulder point to sleeve hem.

## SIZE CHARTS

	XS	S	M	L	XL	2XL	3XL	4XL
Chest	32-34	35-37	38-40	41-43	44-46	48-50	52-54	55-57

# SPEC SHEET + MEASUREMENTS



Eddie Bauer® WeatherEdge® Plus Jacket. EB560

## HOW TO MEASURE

---



### CHEST

Measure under the arm and around the fullest part of the chest with arms down, keeping tape horizontal.

## COLORS

---



Cobalt Blue  
PMS BLACK  
C



Deep Black  
PMS 7540C



Iron Gate  
PMS 654C