

# SPEC SHEET + MEASUREMENTS



## OGIO® Women's Command Long Sleeve Scoop Neck. LOG150

### Product photo



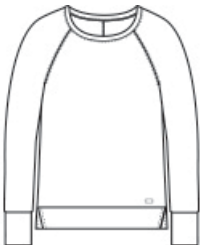
Take command wherever you go in this scoop neck that combines OGIO edge, a hint of fine merino wool and a feminine neckline.

- 4.9-ounce, 85/15 poly/merino wool
- Double-knit with polyester wool jersey face and polyester mesh back
- OGIO heat transfer label for tag-free comfort
- Raglan sleeves
- Matte black metal 3-snap cuffs
- Black reflective O heat transfer on front left hem

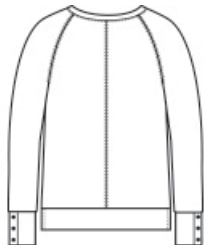
### CARE INSTRUCTIONS

Machine Wash Cold With Like Colors. Do Not Use Fabric Softener. Do Not Bleach. Tumble Dry Low. Remove Promptly. Cool Iron If Necessary.

### Sketches



front



back

# SPEC SHEET + MEASUREMENTS



OGIO® Women's Command Long Sleeve Scoop Neck.  
LOG150

## PRODUCT MEASUREMENTS

	XS	S	M	L	XL	2XL	3XL	4XL
Size	2	4/6	8/10	12/14	16/18	20/22	24/26	28/30
Body Length at Back	24 1/2	25	25 1/2	26	26 1/2	27	27 1/2	28
Bust	18	19	20	21 1/2	23	24 1/2	26 1/2	28 1/2
Raglans and Dolmans Sleeve Length	30 1/4	30 3/4	31 1/4	31 7/8	32 1/2	33 1/8	33 1/2	33 7/8

**Body Length at Back:** Measured from high point shoulder to finished hem at back.

**Bust:** Measured across the chest one inch below armhole when laid flat.

**Raglans and Dolmans Sleeve Length:** Measure from neck edge to finished hem.

## SIZE CHARTS

	XS	S	M	L	XL	2XL	3XL	4XL
Size	2	4/6	8/10	12/14	16/18	20/22	24/26	28/30
Bust	32-34	35-36	37-38	39-41	42-44	45-47	48-51	52-55

# SPEC SHEET + MEASUREMENTS



OGIO® Women's Command Long Sleeve Scoop Neck.  
LOG150

## HOW TO MEASURE

---



### **BUST**

Measure under the arm and around the fullest part of the bust with arms down, keeping tape horizontal.

## COLORS

---



Blacktop  
PMS BLACK  
C



Gear Grey  
PMS COOL  
GRAY 11C

RogueGrey



Spar Blue  
PMS 2189C