

SPEC SHEET + MEASUREMENTS



OGIO® Women's Bolt Full-Zip Hoodie. LOG850

Product photo



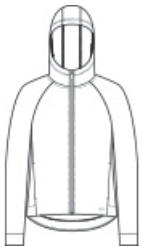
Clean design lines and a matte appearance give this double-knit full-zip a minimalist look with understated OGIO edge.

- 8.9-ounce, 77/23 cotton/poly
- 3-panel hood
- OGIO heat transfer label for tag-free comfort
- Reverse coil zipper with black metal pull with debossed O
- Raglan sleeves
- Slash pockets
- Black reflective O heat transfer on front left hem
- Drop tail hem

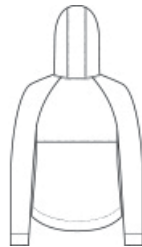
CARE INSTRUCTIONS

Machine Wash Cold With Like Colors. Do Not Use Fabric Softener. Do Not Bleach. Tumble Dry Low. Remove Promptly. Cool Iron If Necessary.

Sketches



front



back

SPEC SHEET + MEASUREMENTS



OGIO® Women's Bolt Full-Zip Hoodie. LOG850

PRODUCT MEASUREMENTS

	XS	S	M	L	XL	2XL	3XL	4XL
Size	2	4/6	8/10	12/14	16/18	20/22	24/26	28/30
Body Length at Back	27	27 1/2	28	28 1/2	29	29 1/2	30	30 1/2
Bust	18 1/2	19 1/2	20 1/2	22	23 1/2	25	27	29
Sleeve Length from Center Back	31 1/2	32	32 1/2	33 1/8	33 3/4	34 3/8	34 3/4	35 1/8

Body Length at Back: Measured from high point shoulder to finished hem at back.

Bust: Measured across the chest one inch below armhole when laid flat.

Sleeve Length from Center Back: Measure from Center Back neck to shoulder point to sleeve hem.

SIZE CHARTS

	XS	S	M	L	XL	2XL	3XL	4XL
Size	2	4/6	8/10	12/14	16/18	20/22	24/26	28/30
Bust	32-34	35-36	37-38	39-41	42-44	45-47	48-51	52-55

SPEC SHEET + MEASUREMENTS



OGIO® Women's Bolt Full-Zip Hoodie. LOG850

HOW TO MEASURE



BUST

Measure under the arm and around the fullest part of the bust with arms down, keeping tape horizontal.

COLORS



Blacktop
PMS BLACK
C



Deep Rose



Turbo Grey
PMS 425C