



MERCER+METTLE™

# Coming In Spring MERCER+METTLE™ Women's Long Sleeve Stretch Woven Shirt MM2001



### ARRIVING IN SPRING 2022

With smart tailoring and a modern fit, this shirt will follow your every move, day or night. Topped with rimmed buttons and a back yoke seam, the solid fabric has a subtle, heathered look thanks to its end-on-end weave.

### Fabric+Weight

- 3.7-ounce, 56/36/8 cotton/poly/spandex
- 3.4-ounce, end-on-end (Air Blue and Gusty Grey)
- 3.5-ounce (solid colors)
- 3.8-ounce (White)

### Features+Benefits

- Easy care
- Open collar
- Rimmed, satin-finished buttons
- Back yoke
- Relaxed fit
- Drop tail hem

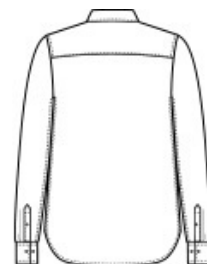
\*\*

### CARE INSTRUCTIONS

Machine Wash Cold With Like Colors. Only Non-Chlorine Bleach If Needed. Tumble Dry Low. Cool Iron If Needed.

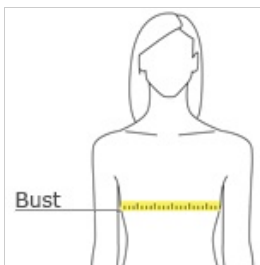


front



back

### HOW TO MEASURE



### BUST

Measure under the arm and around the fullest part of the bust with arms down, keeping tape horizontal.

### SIZE CHART

	XS	S	M	L	XL	2XL	3XL	4XL
Size	2	4/6	8/10	12/14	16/18	20/22	24/26	28/30
Bust	32-34	35-36	37-38	39-41	42-44	45-47	48-51	52-55

### COLOR INFORMATION



Air Blue End On End  
PMS 651C



Deep Black  
PMS BLACK C



Gusty Grey End On White  
PMS COOL GREY  
8C

