

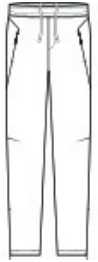


Ideal for warmups or cooldowns, the Circuit Jogger moves with you throughout your practice, game or day.

- 7.8-ounce, 78/22 poly/spandex
- Tear-away removable label
- Elastic waistband with drawcord
- Secure hand pockets
- Secure back pocket
- Ankle zips for easy on/off

**CARE INSTRUCTIONS**

Machine Wash Cold With Like Colors. Do Not Use Fabric Softener. Do Not Bleach. Tumble Dry Low. Remove Promptly. Cool Iron If Needed.



front



back

**HOW TO MEASURE**



**WAIST**

Measure around the smallest part of the natural waist.

**SIZE CHART**

	XS	S	M	L	XL	2XL	3XL	4XL
Waist	26-28	29-31	32-34	35-37	38-40	41-43	44-47	48-51

**COLOR INFORMATION**



Deep Black  
PMS BLACK C



Graphite  
PMS NO MATCH