

# SPEC SHEET + MEASUREMENTS



OGIO® Women's Luuma Flex Long Sleeve V-Neck.  
LOG825

## Product photo



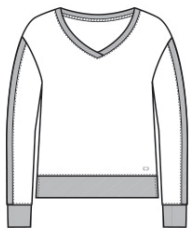
Cozy but refined, this OGIO look is elevated enough for the office but also perfect for travel.

- 7.1-ounce, 57/38/5 modal/poly/spandex French terry
- OGIO heat transfer label for tag-free comfort
- Rib knit bound collar, cuffs and hem
- Pieced rib sleeve details
- Side slits
- Iridescent heat transfer O on front left hem

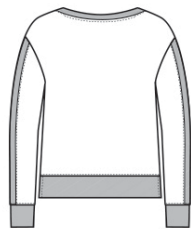
## CARE INSTRUCTIONS

Machine Wash Cold With Like Colors. Do Not Use Fabric Softener. Only Non-Chlorine Bleach When Needed. Tumble Dry Low. Remove Promptly. Cool Iron If Necessary.

## Sketches



front



back

# SPEC SHEET + MEASUREMENTS



OGIO® Women's Luuma Flex Long Sleeve V-Neck.  
LOG825

## PRODUCT MEASUREMENTS

	XS	S	M	L	XL	2XL	3XL	4XL
Size	2	4/6	8/10	12/14	16/18	20/22	24/26	28/30
Body Length at Back	24 1/2	25	25 1/2	26	26 1/2	27	27 1/2	28
Bust	19	20	21	22 1/2	24	25 1/2	27 1/2	29 1/2
Sleeve Length from Center Back	31 1/2	32	32 1/2	33 1/8	33 3/4	34 3/8	34 3/4	35 1/8

**Body Length at Back:** Measured from high point shoulder to finished hem at back.

**Bust:** Measured across the chest one inch below armhole when laid flat.

**Sleeve Length from Center Back:** Measure from Center Back neck to shoulder point to sleeve hem.

## SIZE CHARTS

	XS	S	M	L	XL	2XL	3XL	4XL
Size	2	4/6	8/10	12/14	16/18	20/22	24/26	28/30
Bust	32-34	35-36	37-38	39-41	42-44	45-47	48-51	52-55

# SPEC SHEET + MEASUREMENTS



OGIO® Women's Luuma Flex Long Sleeve V-Neck.  
LOG825

## HOW TO MEASURE

---



### **BUST**

Measure under the arm and around the fullest part of the bust with arms down, keeping tape horizontal.

## COLORS

---



Blacktop  
PMS BLACK  
C



Ivory Snow



Petrol Grey  
Heather  
PMS COOL  
GREY 10C