



Sport-Tek® Ladies Exchange 1.5 Long Sleeve 1/2-Zip LST711



Why did we name this stretchable 1/2-zip the 1.5? Because it's light enough to wear as a tee, but warm enough to be a light layer.

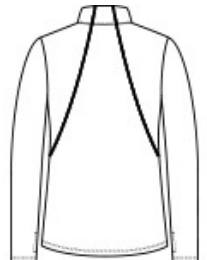
- 5.6-ounce, 88/12 poly/spandex
- Removable tag for comfort and relabeling
- Invisible zipper
- Coverstitch seams throughout
- Open cuffs and hem
- Thumbholes to keep hands warm

CARE INSTRUCTIONS

Machine wash with like colors. Do not use fabric softner, only non-chlorine bleach, when needed. Tumble dry low, remove promptly. Cool iron if necessary. Do not dry clean.



front



back

HOW TO MEASURE



BUST

Measure under the arm and around the fullest part of the bust with arms down, keeping tape horizontal.

SIZE CHART

	XS	S	M	L	XL	XXL	3XL	4XL
Size	2	4/6	8/10	12/14	16/18	20/22	24/26	28/30
Bust	32-34	35-36	37-38	39-41	42-44	45-47	48-51	52-55

COLOR INFORMATION



Dark Denim Heather
PMS 2380C



Graphite Heather
PMS COOL GRAY 11C



Grey Heather
PMS COOL GRAY 10C



Hyacinth Heather
PMS 3543C



True Royal Heather
PMS 7687C