

SPEC SHEET + MEASUREMENTS

SPORT-TEK

Sport-Tek® Women's Lightweight French Terry Pullover Hoodie. LST272

Product photo



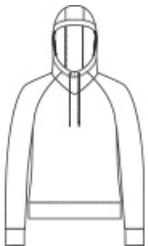
The casual ease of soft French terry in a versatile pullover.

- 6.5-ounce, 59/41 combed ring spun cotton/poly French terry
- Tag-free label
- Three-panel hood
- Cowl neck
- Dyed-to-match elastic drawcords with black plastic tips
- Cropped length

CARE INSTRUCTIONS

Machine wash cold with like colors, only non-chlorine bleach if needed. Tumble dry low, cool iron if necessary.

Sketches



front



back

SPEC SHEET + MEASUREMENTS



Sport-Tek® Women's Lightweight French Terry Pullover Hoodie. LST272

PRODUCT MEASUREMENTS

	XS	S	M	L	XL	XXL	3XL	4XL
Body Length at Back	22 1/2	23	23 1/2	24	24 1/2	25	25 1/2	26
Bust	19	20	21	22 1/2	24	25 1/2	27 1/2	29 1/2
Sleeve Length from Center Back	32	32 1/2	33	33 5/8	34 1/4	34 7/8	35 1/4	35 5/8

Body Length at Back: Measured from high point shoulder to finished hem at back.

Bust: Measured across the chest one inch below armhole when laid flat.

Sleeve Length from Center Back: Measure from Center Back neck to shoulder point to sleeve hem.

SIZE CHARTS

	XS	S	M	L	XL	XXL	3XL	4XL
Bust	32-34	35-36	37-38	39-41	42-44	45-47	48-51	52-55
Size	2	4/6	8/10	12/14	16/18	20/22	24/26	28/30

SPEC SHEET + MEASUREMENTS

SPORT-TEK

Sport-Tek® Women's Lightweight French Terry Pullover Hoodie. LST272

HOW TO MEASURE



BUST

Measure under the arm and around the fullest part of the bust with arms down, keeping tape horizontal.