

SPEC SHEET + MEASUREMENTS



OGIO® Women's Luuma Sherpa Full-Zip. LOG815

Product photo



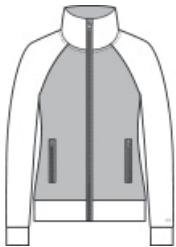
A sherpa fleece body joins performance poly for the ultimate in coziness and mobility.

- 13.6-ounce, 100% polyester sherpa fleece body
- 8.3-ounce, 52/44/4 poly/cotton/spandex outer collar, sleeves and hem
- Exaggerated cowl neck
- OGIO heat transfer label for tag-free comfort
- Exposed molded zippers with debossed O zipper pulls
- O heat transfer on left sleeve
- Front zippered pockets

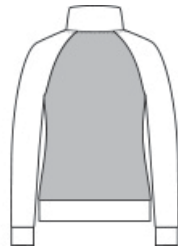
CARE INSTRUCTIONS

Machine wash cold with like colors. Do not bleach. Tumble dry low. Do not iron. Do not use fabric softener. Do not dry clean.

Sketches



front



back

SPEC SHEET + MEASUREMENTS



OGIO® Women's Luuma Sherpa Full-Zip. LOG815

PRODUCT MEASUREMENTS

	XS	S	M	L	XL	2XL	3XL	4XL
Body Length at Back	24	24 1/2	25	25 1/2	26	26 1/2	27	27 1/2
Bust	19 1/2	20 1/2	21 1/2	23	24 1/2	26	28	30
Sleeve Length from Center Back	31 1/2	32	32 1/2	33 1/8	33 3/4	34 3/8	34 3/4	35 1/8

Body Length at Back: Measured from high point shoulder to finished hem at back.

Bust: Measured across the chest one inch below armhole when laid flat.

Sleeve Length from Center Back: Measure from Center Back neck to shoulder point to sleeve hem.

SIZE CHARTS

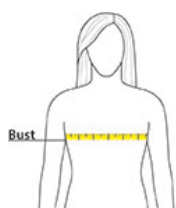
	XS	S	M	L	XL	2XL	3XL	4XL
Bust	32-34	35-36	37-38	39-41	42-44	45-47	48-51	52-55
Size	2	4/6	8/10	12/14	16/18	20/22	24/26	29/30

SPEC SHEET + MEASUREMENTS



OGIO® Women's Luuma Sherpa Full-Zip. LOG815

HOW TO MEASURE



BUST

Measure under the arm and around the fullest part of the bust with arms down, keeping tape horizontal.

COLORS



Blacktop
PMS BLACK
C



Ivory Snow