

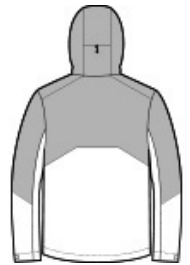


Don't let its lightweight appearance fool you. This waterproof 2-layer tech jacket delivers serious rain and wind protection thanks to a 10K/10K waterproof, breathable fabric, a DWR finish and fully sealed seams.

- 100% polyester canvas with TPU laminate and durable water-repellent (DWR) finish
- 100% polyester lining
- 10,000MM fabric waterproof rating
- 10,000G/M2 fabric breathability rating
- Attached, adjustable hood with locking drawcord
- Full-length interior storm flap with chin guard
- Interior zippered chest pocket
- Waterproof center front zipper
- Covered front reverse coil zippered pockets
- Adjustable rubber tab cuffs
- Adjustable locking drawcord at hem
- Port Pocket™ for easy embroidery access



front

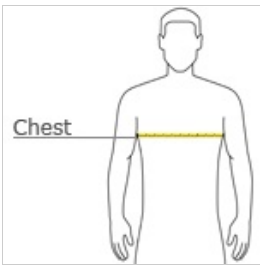


back

CARE INSTRUCTIONS

Machine wash cold with like colors. Only non-chlorine bleach when needed. Tumble dry low. Cool iron if necessary. Do not Dry Clean.

HOW TO MEASURE



CHEST WIDTH

Measure under the arm and around the fullest part of the chest with arms down, keeping tape horizontal.

SIZE CHART

| | XS | S | M | L | XL | 2XL | 3XL | 4XL |
|-------|-------|-------|-------|-------|-------|-------|-------|-------|
| Chest | 32-34 | 35-37 | 38-40 | 41-43 | 44-46 | 47-49 | 50-53 | 54-57 |

COLOR INFORMATION

| | | | |
|--|---|---|---|
|  |  |  |  |
| Deep Black PMS NTR BLACK C | Estate Blue/ Blue PMS 2767C | Cobalt Sangria/ True Red PMS 201C | Storm Grey/ Shadow Grey PMS COOL GREY 10 C |