

## SPEC SHEET + MEASUREMENTS

**DISTRICT**

District® Women's Perfect Tri® French Terry Full-Zip Hoodie. DT456

### Product photo



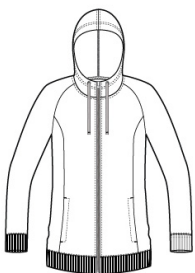
With perfect tri blend softness, this hoodie is versatile and comfortable.

- 8.3-ounce, 61/31/8 ring spun cotton/poly/rayon French terry
- Tear-away label
- Unlined hood
- Natural drawcords, back neck tape and zipper tape
- YKK Metaluxe® zipper
- Front and back seaming
- Elongated length
- Front pockets
- 1x1 rib knit cuffs and hem

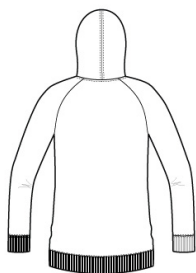
### CARE INSTRUCTIONS

Machine wash cold with like colors, only non-chlorine bleach when needed, tumble dry low, warm iron if necessary.

### Sketches



front



back

# SPEC SHEET + MEASUREMENTS



District® Women's Perfect Tri® French Terry Full-Zip Hoodie. DT456

## PRODUCT MEASUREMENTS

	XS	S	M	L	XL	XXL	3XL	4XL
Body Length at Front	27 1/2	28	28 1/2	29 1/4	30	30 1/2	31	31
Bust	17 3/4	18 3/4	19 3/4	21 1/4	22 3/4	24 3/4	26 3/4	28 3/4
Size	2	4/6	8/10	12/14	16/18	20/22	24/26	28/30
Sleeve Length	31	31 1/2	32	32 5/8	33 1/4	33 7/8	34 1/4	34 5/8

**Body Length at Front:** Measure from high point shoulder to lowest point of hem at front.

**Bust:** Measured across the chest one inch below armhole when laid flat.

**Sleeve Length:** Start at center of neck and measure down shoulder, down sleeve to hem.

## SIZE CHARTS

	XS	S	M	L	XL	XXL	3XL	4XL
Bust	32-34	35-36	37-38	39-41	42-44	45-47	48-51	52-55
Size	2	4/6	8/10	12/14	16/18	20/22	24/26	28/30

## SPEC SHEET + MEASUREMENTS

**DISTRICT**

District® Women's Perfect Tri® French Terry Full-Zip Hoodie. DT456

### HOW TO MEASURE

---



#### **BUST**

Measure under the arm and around the fullest part of the bust with arms down, keeping tape horizontal.