



OGIO® Tread Polo. OG135

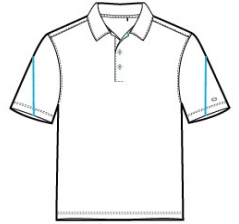


This polo dares to tread on the edge with its slightly linear stripe and black pinpoint dot appearance.

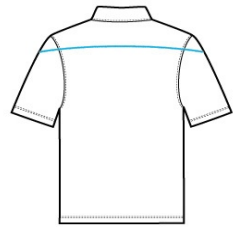
- 4.6-ounce, 73/21/6 cotton/poly/spandex jacquard jersey with stay-cool wicking technology
- OGIO heat transfer label for tag-free comfort
- Self-fabric collar
- 3-button placket with flat metal buttons
- Contrast coverstitching on back yoke and sleeves
- Set-in, open hem sleeves
- Rubber heat transfer O on left sleeve

CARE INSTRUCTIONS

Machine wash cold with like colors. Do not bleach. Tumble dry low. Cool iron. Do not use fabric softener. Do not dry clean.



front



back

HOW TO MEASURE



CHEST WIDTH

Measure under the arm and around the fullest part of the chest with arms down, keeping tape horizontal.

SIZE CHART

	XS	S	M	L	XL	2XL	3XL	4XL
Chest	32-34	35-37	38-40	41-43	44-46	47-49	50-53	54-57

COLOR INFORMATION



Blacktop Heather
PMS 7540C



Blue Heather
PMS NO MATCH



Grey Heather
PMS NO MATCH