

# SPEC SHEET + MEASUREMENTS



## OGIO® Trax Jacket. OG726

### Product photo



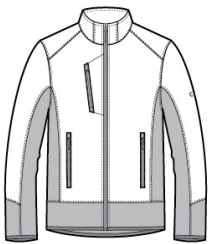
This water-resistant, forward-thinking jacket fuses a technical grid pattern with stretch side panels for style that moves at your speed.

- 100% woven poly shell bonded to 100% poly knit fleece with 93/7 poly/spandex fleece side panels
- OGIO heat transfer label for tag-free comfort
- Reverse coil zippers
- Right chest pocket
- Zippered front pockets with OGIO zipper pulls
- Black reflective O on left sleeve
- Open cuffs and open drop tail hem with binding

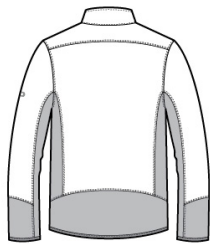
### CARE INSTRUCTIONS

Machine wash cold with like colors. Do not bleach. Tumble dry low. Remove Promptly. Cool iron if needed.

### Sketches



front



back

# SPEC SHEET + MEASUREMENTS



OGIO® Trax Jacket. OG726

## PRODUCT MEASUREMENTS

	XS	S	M	L	XL	2XL	3XL	4XL
Body Length at Front	27 1/4	28 1/4	29 1/4	30 1/4	31 1/4	32 1/4	32 3/4	33 1/4
Chest	18 1/2	20	21 1/2	23	24 1/2	26	28	30
Sleeve Length	34 1/4	35	35 3/4	36 1/2	37 1/4	38	38 3/4	39 1/2

**Body Length at Front:** Measure from high point shoulder to lowest point of hem at front.

**Chest:** Measured across the chest one inch below armhole when laid flat.

**Sleeve Length:** Start at center of neck and measure down shoulder, down sleeve to hem.

## SIZE CHARTS

	XS	S	M	L	XL	2XL	3XL	4XL
Chest	32-34	35-37	38-40	41-43	44-46	47-49	50-53	54-57

## HOW TO MEASURE



### CHEST

Measure under the arm and around the fullest part of the chest with arms down, keeping tape horizontal.

# SPEC SHEET + MEASUREMENTS



OGIO® Trax Jacket. OG726

## COLORS

---



Blacktop  
PMS BLACK  
C