

SPEC SHEET + MEASUREMENTS



OGIO® Flash Jacket. OE711

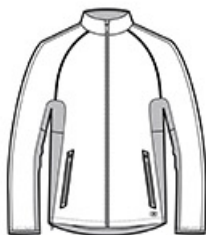
Product photo



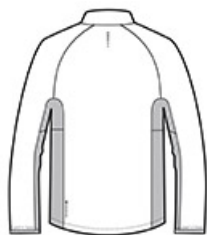
ALLOVER REFLECTION
WATER-RESISTANT
WIND-RESISTANT
DESIGNED FOR DAY-INTO-NIGHT ACTIVE PURSUITS LIKE
RUNNING & CYCLING

- 100% poly shell with mesh lining
- Reflective OGIO heat transfer label for tag-free comfort
- Zip-through cadet collar
- Reverse coil zippers with locking pulls
- Contrast stacked O heat transfer at center back
- Raglan sleeves
- Elastic cuffs
- Front zippered pockets with heat transfer welding details
- Embroidery access pocket
- Slight drop tail hem with drawcord and toggle for adjustability
- Contrast O heat transfer at front left hem

Sketches



front



back

CARE INSTRUCTIONS

Machine wash cold separately, delicate cycle. Hang to dry. Do not bleach. Do not iron. Do not dry clean.

SPEC SHEET + MEASUREMENTS



OGIO® Flash Jacket. OE711

PRODUCT MEASUREMENTS

	XS	S	M	L	XL	2XL	3XL	4XL
Body Length at Back	27 1/2	28 1/2	29 1/2	30 1/2	31 1/2	32 1/2	33	33 1/2
Chest	20	21 1/2	23	24 1/2	26	27 1/2	29 1/2	31 1/2
Sleeve Length from Center Back	34 3/4	35 1/2	36 1/4	37	37 3/4	38 1/2	39 1/4	40

Body Length at Back: Measured from high point shoulder to finished hem at back.

Chest: Measured across the chest one inch below armhole when laid flat.

Sleeve Length from Center Back: Measure from Center Back neck to shoulder point to sleeve hem.

SIZE CHARTS

	XS	S	M	L	XL	2XL	3XL	4XL
Chest	32-34	35-37	38-40	41-43	44-46	47-49	50-53	54-57

SPEC SHEET + MEASUREMENTS



OGIO® Flash Jacket. OE711

HOW TO MEASURE



CHEST

Measure under the arm and around the fullest part of the chest with arms down, keeping tape horizontal.

COLORS



Reflective/
Blacktop