

SPEC SHEET + MEASUREMENTS

SPORT-TEK

Sport-Tek® Women's PosiCharge® Electric Heather Fleece Hooded Pullover. LST225

Product photo



Stay charged in this moisture-wicking, color-preserving fleece in heathered yarn dye.

- 5.9-ounce, 100% polyester yarn-dyed fleece with PosiCharge technology
- Tag-free label
- Taped neck
- Three-panel hood with solid lining
- Set-in sleeves
- Princess seams with integrated front pouch pocket
- Elongated self-fabric cuffs and hem

Please note: This product is transitioning from woven labels to tag-free labels. Your order may contain a combination of both labels.

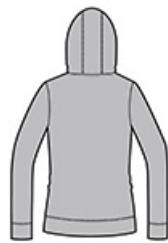
CARE INSTRUCTIONS

Machine wash cold with like colors. Do not use softener. Remove promptly. Do not bleach. Tumble dry low. Cool iron if necessary.

Sketches



front



back

SPEC SHEET + MEASUREMENTS

SPORT-TEK

Sport-Tek® Women's PosiCharge® Electric Heather Fleece Hooded Pullover. LST225

PRODUCT MEASUREMENTS

	XS	S	M	L	XL	XXL	3XL	4XL
Body Length at Back	26	26 1/2	27	27 1/2	28	28 1/2	29	29 1/2
Bust	18 1/2	19 1/2	20 1/2	22	23 1/2	25	27	29
Size	2	4/6	8/10	12/14	16/18	20/22	24/26	28/30
Sleeve Length from Center Back	32	32 1/2	33	33 5/8	34 1/4	34 7/8	35 1/4	35 5/8

Body Length at Back: Measured from high point shoulder to finished hem at back.

Bust: Measured across the chest one inch below armhole when laid flat.

Sleeve Length from Center Back: Measure from Center Back neck to shoulder point to sleeve hem.

SIZE CHARTS

	XS	S	M	L	XL	XXL	3XL	4XL
Bust	32-34	35-36	37-38	39-41	42-44	45-47	48-51	52-55
Size	2	4/6	8/10	12/14	16/18	20/22	24/26	28/30

SPEC SHEET + MEASUREMENTS

SPORT-TEK

Sport-Tek® Women's PosiCharge® Electric Heather
Fleece Hooded Pullover. LST225

HOW TO MEASURE



BUST

Measure under the arm and around the fullest part of the bust with arms down, keeping tape horizontal.