

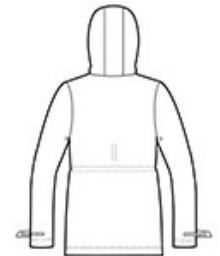


We reinvented our classic rain jacket with this critically seam-sealed slicker that features water resistance, a soft hand feel and reflective details for enhanced visibility and a modern look.

- 100% PU-coated polyester
- 100% polyester mesh-lined body and hood
- 100% polyester-lined sleeves
- 1500MM fabric waterproof rating
- Attached hood with adjustable locking drawcord
- Molded zipper
- Grommets for breathability under arms
- Longer length with adjustable locking drawcord waist
- Adjustable self-fabric tab cuffs with hook and loop closures and reflective detail
- Front zippered pockets with reflective detail
- Port Pocket™ for easy embroidery access
- Open hem with adjustable locking drawcord
- Reflective details at back



front

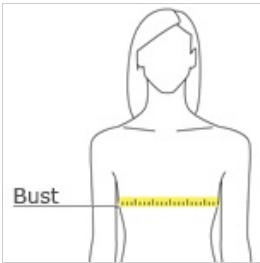


back

CARE INSTRUCTIONS

Machine wash cold. Only non-chlorine bleach when needed.
Line dry. Do not iron. Do not dry clean.

HOW TO MEASURE








BUST

Measure under the arm and around the fullest part of the bust with arms down, keeping tape horizontal.

SIZE CHART

| | XS | S | M | L | XL | XXL | 3XL | 4XL |
|------|-------|-------|-------|-------|-------|-------|-------|-------|
| Size | 2 | 4/6 | 8/10 | 12/14 | 16/18 | 20/22 | 24/26 | 28/30 |
| Bust | 32-34 | 35-36 | 37-38 | 39-41 | 42-44 | 45-47 | 48-51 | 52-55 |

COLOR INFORMATION

| | | | | |
|--|---|---|---|---|
|  |  |  |  |  |
| Black PMS NTR BLACK C | Isla Blue PMS 631C | Navy PMS 532C | Northern Grey PMS 424C | Pink Horizon PMS 7635C |