

# SPEC SHEET + MEASUREMENTS



## OGIO® Torque II Pullover. OG2010

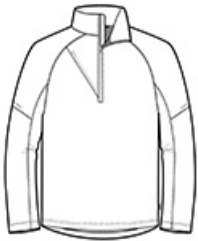
### Product photo



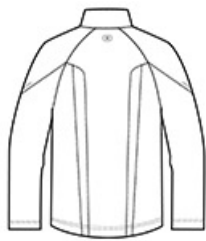
The next generation of Torque is designed with sleek, technical seaming and welding details. It also offers very good water protection.

- 8-ounce, 100% poly interlock bonded to 6.5-ounce, 100% poly microfleece
- 3000MM fabric waterproof rating
- 3000G/M<sup>2</sup> fabric breathability rating
- Contrast color inner fleece
- Zip-through cadet collar
- O heat transfer at center back
- Welding details on sleeves
- Welding at right chest pocket with black matte O zipper pull
- Reverse coil zipper with rubber OGIO zipper pull
- Open cuffs
- OGIO woven badge on left side seam
- Open hem

### Sketches



front



back

### CARE INSTRUCTIONS

Machine wash cold. Tumble dry low. Do not dryclean. Do not iron. Do not bleach.

# SPEC SHEET + MEASUREMENTS



OGIO® Torque II Pullover. OG2010

## PRODUCT MEASUREMENTS

	XS	S	M	L	XL	2XL	3XL	4XL
Body Length at Back	26 3/4	27 3/4	28 7/8	30	31 1/8	32 1/4	32 7/8	33 1/2
Chest	19	20 1/2	22	23 1/2	25	26 1/2	28 1/2	30 1/2
Sleeve Length from Center Back	34 1/4	35	35 3/4	36 1/2	37 1/4	38	38 3/4	39 1/2

**Body Length at Back:** Measured from high point shoulder to finished hem at back.

**Chest:** Measured across the chest one inch below armhole when laid flat.

**Sleeve Length from Center Back:** Measure from Center Back neck to shoulder point to sleeve hem.

## SIZE CHARTS

	XS	S	M	L	XL	2XL	3XL	4XL
Chest	32-34	35-37	38-40	41-43	44-46	47-49	50-53	54-57

# SPEC SHEET + MEASUREMENTS



OGIO<sup>®</sup> Torque II Pullover. OG2010

## HOW TO MEASURE

---



### CHEST

Measure under the arm and around the fullest part of the chest with arms down, keeping tape horizontal.