

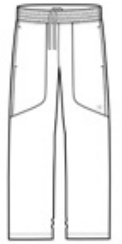


**STRETCH**  
**FLAT LOCK SEAMS FOR COMFORT**  
**REFLECTIVE DETAILS**

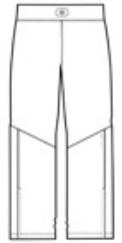
- 7.4-ounce, 95/5 poly/spandex jersey
- OGIO Endurance heat transfer label for tag-free comfort
- Elastic back waistband with contrast jacquard O, interior drawcord at front
- Leg zippers with locking pulls
- Two front pockets
- Reflective O heat transfer on front left leg
- Reflective O Endurance heat transfer on back right leg
- Slightly tapered legs

**CARE INSTRUCTIONS**

Machine wash cold with like colors. Remove promptly. Use non-chlorine bleach if needed. Cool iron if necessary. Do not dry clean.

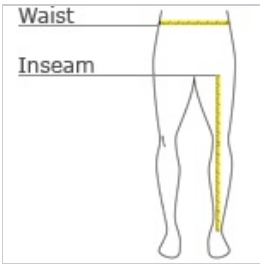


front



back

**HOW TO MEASURE**



**WAIST**  
 Measure around the smallest part of the natural waist.

**INSEAM**  
 Measure a similar style pant that fits well and is the desired length. Measure from the crotch seam to the hem.

**SIZE CHART**

	XS	S	M	L	XL	2XL	3XL	4XL
Waist	26-28	29-31	32-34	35-37	38-40	41-43	44-47	48-51
Inseam	30	31	32	32	33	33 1/2	34	34 1/2

**COLOR INFORMATION**



Blacktop  
 PMS NTR BLACK  
 C